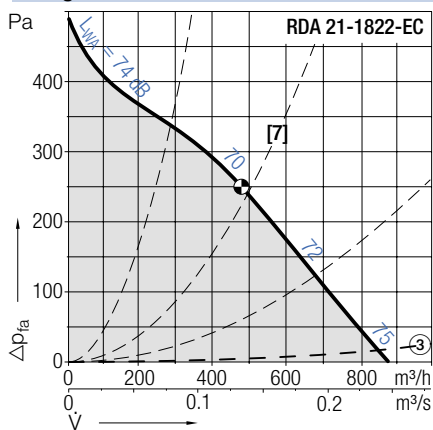


# RDA 21-1819/-1822

RDA <i>genovent</i>		Tekniska data						Technical Data					
ur- vor	Pol- tal	Spänning/ anslutning	Frek- vens	Varvtal	Max. effekt- förbrukning	Märk- ström	Startström/ Märkström	$V_{max}$	$L_{WA8}$ vid $V_{max}$	onden- sator	Skyddsklass/ Isolationskl.	Vikt RDA 21	Media- temp.
Curves	Poles	Voltage/ Connection	Fre- quency	Speed	Max. power consumption	Nominal current	Starting/Full load current	$V_{max}$	$L_{WA8}$ at $V_{max}$	Capa- citor	Protection/ Temp. class	Weight RDA 21	Media temp.
DA 21-		V	Hz	v/min	kW	A		m <sup>3</sup> /h	dB	μF		kg	°C
1822-EC• [7]	-	230, 1~	50/60	2450	0.084	0.76	-	880	75	-	IP44/B	5.0	-20...+60

• (även) steglöst varvtalsreglerbar med spänning | • (also) stepless speed controllable by tension variation

RDA <i>genovent</i>	Kurvor	Curves	$\rho_1=1.15 \text{ kg/m}^3$
---------------------	--------	--------	------------------------------



RDA <i>genovent</i>		Tillbehör				Accessories		
	Arbets- brytare	Motorskydds- brytare	Transformator 7-stegs	Transformator 5-stegs	Vridtyristor	Varvtalsregl. elektronisk	Varvtalsregl. mikroprocessor	Varvtalsregl. elektronisk
	Isolator	Motor protection unit	Transformer 7 taps	Transformer 5-steps	Speed regulator electronic	Speed regulator electronic	Speed regulator micro processor	Speed controller electronic
DA 21-	ESH	ESM	ETO	ETH	EPH	EPA	EPA	EPA
1822-4E•	21-0030-22	⑤	10-0018-5E	31-0020-5E	03-0010-5E	-	93-0023-5E	-

# RDA 21-1819/-1822

## RDA genovent



### DA 21- genovent

Gebhardt ytterrotormotor med monterat radialfläkt hjul.

#### Tillbehör / Index

- ② Lutning upp till 45° i steg om 5° är möjlig
- ③ Tryckfall i spjäll
- ⑤ På dessa typer av motorer ligger termokontakterna **internt** i serie med lindningen. Skulle motorn uppnå gränstemperaturen, kopplar kontakterna från motorn omedelbart. Någon motorskydds brytare behövs inte.

### DA 21- genovent

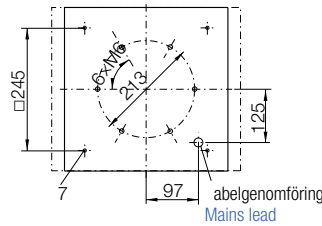
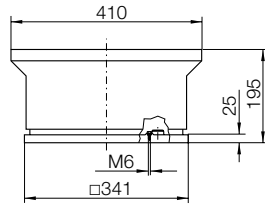
Gebhardt external rotor motor with impeller fitted directly.

#### Accessories / Index

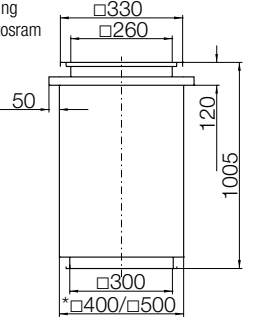
- ② inclination in 5° steps up to 45° possible
- ③ Pressure loss at back draught damper
- ⑤ These fan types have motors with thermal contacts connected **internally** in series with the winding. They shut down the motor directly a preset temperature limit is reached. Motor protection units are not needed.

Mått i mm, vi förbehåller oss rätten till ändringar.

Dimensions in mm, Subject to change.



**G-200** [St]  
Takgenomföring  
inkl. fällbar stosram  
\*EI30/EI60  
Roof duct  
with Foldable  
frame  
\*EI30/EI60

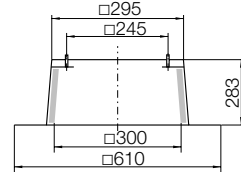


#### Tillbehör

**ZBS 01-0031** [Al] 3 kg

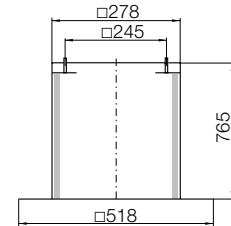
**ZBS 20-0031** [St] 6 kg

Stos för platta tak  
Flat roof upstand



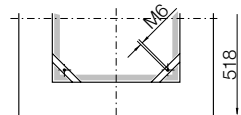
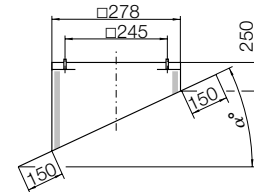
**ZBS 23-0031** [St] 10 kg

Stos för platta tak, hög  
Flat roof upstand tall



**ZBS 09-0031-②** [Al] 4 kg

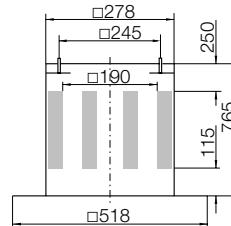
Stos för snedtak  
Inclined roof upstand



**ZDS 01-0028** [Al] 11 kg

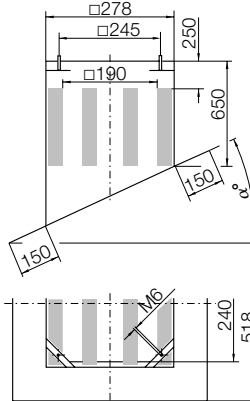
**ZDS 20-0028** [St] 15 kg

Stosljuddämpare  
Upstand silencer



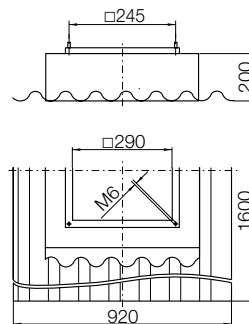
**ZDS 09-0028-②** [Al] 11 kg

Stosljuddämpare för snedtak  
Inclined roof upstand silencer



**ZBS 11-0031** [GF ] 11 kg

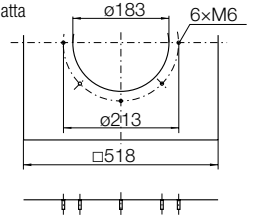
Stos för korrugerat tak  
Soaker sheet WDS



#### Accessories

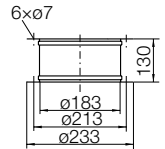
**ZBU 01-0028-18** [St] 2 kg

Anslutningsplatta  
Connection  
plate



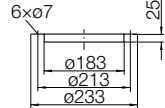
**ZKE 11-0180** 0.7 kg

Dukstos, inlopp  
Inlet connection  
(flexible)



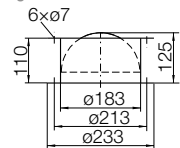
**ZKF 11-0180** 0.3 kg

Motfläns, inlopp  
Mating flange



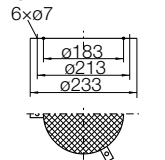
**ZLK 01-0180** 4 kg

Självstängande  
backspjäll  
Automatic  
shutter



**ZSG 04-0180** 0.1 kg

Inloppsgaller  
Mesh inlet guard

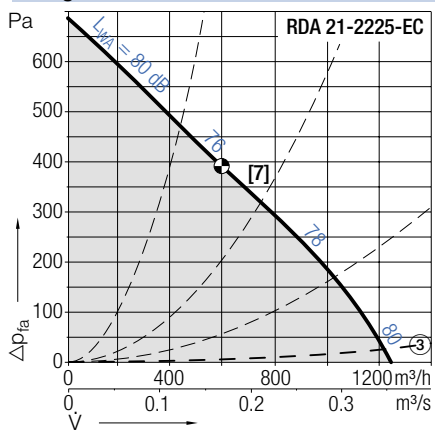


# RDA 21-2225

RDA <i>genovent</i>		Tekniska data						Technical Data						
ur- vor	Pol- tal	Spänning/ anslutning	Frek- vens	Varvtal	Max. effekt- förbrukning	Märk- ström	Startström/ Märkström	$V_{max}$	$L_{WA8}$ vid $V_{max}$	onden- sator	Skyddsklass/ Isolationskl.	Vikt RDA 21	Media- temp.	
Curves	Poles	Voltage/ Connection	Fre- quency	Speed	Max. power consumption	Nominal current	Starting/Full load current	$V_{max}$	$L_{WA8}$ at $V_{max}$	Capa- citor	Protection/ Temp. class	Weight RDA 21	Media temp.	
DA 21-		V	Hz	v/min	kW	A		m <sup>3</sup> /h	dB	μF		kg	°C	
2225-EC•	[7]	-	230, 1~	50/60	2620	0.17	1.42	-	1240	80	-	IP44/B	8.0	-20...+60

• (även) steglöst varvtalsreglerbar med spänning | • (also) stepless speed controllable by tension variation

RDA <i>genovent</i>	Kurvor	Curves	$\rho_1=1.15 \text{ kg/m}^3$
---------------------	--------	--------	------------------------------



RDA <i>genovent</i>		Tillbehör				Accessories			
	Arbets- brytare	Motorskydds- brytare	Transformator 7-stegs	Transformator 5-stegs	Vridtyristor	Varvtalsregl. elektronisk	Varvtalsregl. mikroprocessor	Varvtalsregl. elektronisk	Potentiometer
	Isolator	Motor protection unit	Transformer 7 taps	Transformer 5-steps	Speed regulator electronic	Speed regulator electronic	Speed regulator micro processor	Speed controller electronic	Speed regulator module
DA 21-	ESH	ESM	ETO	ETH	EPH	EPA	EPA	EPA	EGH
2225-EC•	21-0030-22	-	-	-	-	-	-	-	EGH 01

# RDA 21-2225

## RDA genovent



### DA 21- genovent

Gebhardt ytterrotormotor med monterat radialfläkt hjul.

#### Tillbehör / Index

- ② Lutning upp till 45° i steg om 5° är möjlig
- ③ Tryckfall i spjäll
- ⑤ På dessa typer av motorer ligger termokontakterna **internt** i serie med lindningen. Skulle motorn uppnå gränstemperaturen, kopplar kontakterna från motorn omedelbart. Någon motorskydds brytare behövs inte.

### DA 21- genovent

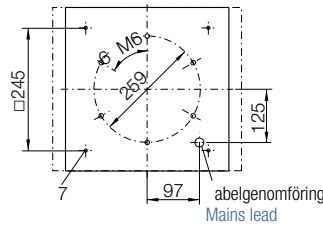
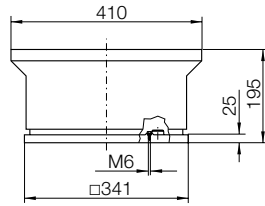
Gebhardt external rotor motor with impeller fitted directly.

#### Accessories / Index

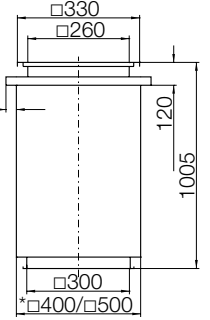
- ② inclination in 5° steps up to 45° possible
- ③ Pressure loss at back draught damper
- ⑤ These fan types have motors with thermal contacts connected **internally** in series with the winding. They shut down the motor directly a preset temperature limit is reached. Motor protection units are not needed.

Mått i mm, vi förbehåller oss rätten till ändringar.

Dimensions in mm, Subject to change.



**G-200** [St]  
Takgenomföring  
inkl. fällbar stosram  
\*EI30/EI60  
Roof duct  
with Foldable  
frame  
\*EI30/EI60

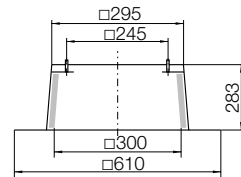


#### Tillbehör

**ZBS 01-0031** [Al] 3 kg

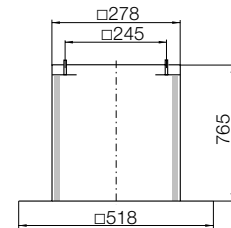
**ZBS 20-0031** [St] 6 kg

Stos för platta tak  
Flat roof upstand



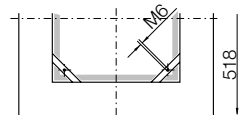
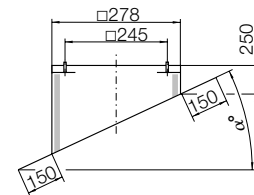
**ZBS 23-0031** [St] 10 kg

Stos för platta tak, hög  
Flat roof upstand tall



**ZBS 09-0031-②** [Al] 4 kg

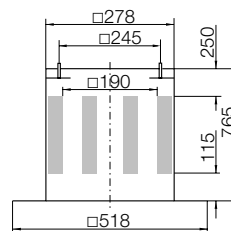
Stos för snedtak  
Inclined roof upstand



**ZDS 01-0028** [Al] 11 kg

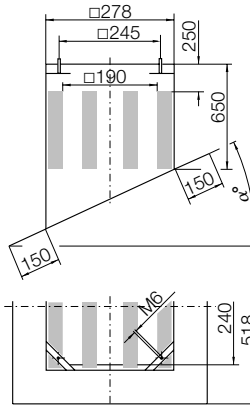
**ZDS 20-0028** [St] 15 kg

Stosljuddämpare  
Upstand silencer



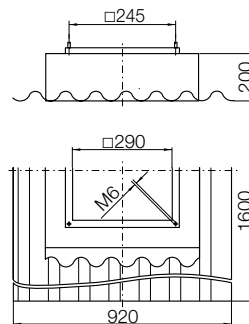
**ZDS 09-0028-②** [Al] 11 kg

Stosljuddämpare för snedtak  
Inclined roof upstand silencer



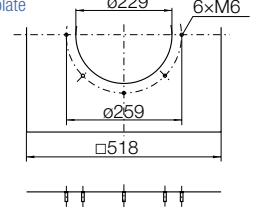
**ZBS 11-0031** [GF ] 11 kg

Stos för korrugerat tak  
Soaker sheet WDS



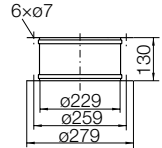
**ZBU 01-0028-22** [St] 2 kg

Anslutningsplatta  
Connection plate



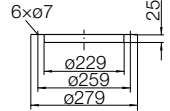
**ZKE 13-0225** 1.0 kg

Dukstos, inlopp  
Inlet connection  
(flexible)



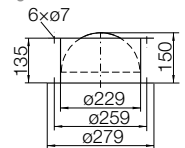
**ZKF 13-0225** 0.5 kg

Motfläns, inlopp  
Mating flange



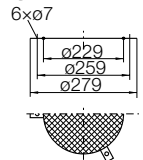
**ZLK 03-0225** 5 kg

Självstängande  
backspjäll  
Automatic  
shutter



**ZSG 04-0225** 0.2 kg

Inloppsgaller  
Mesh inlet guard

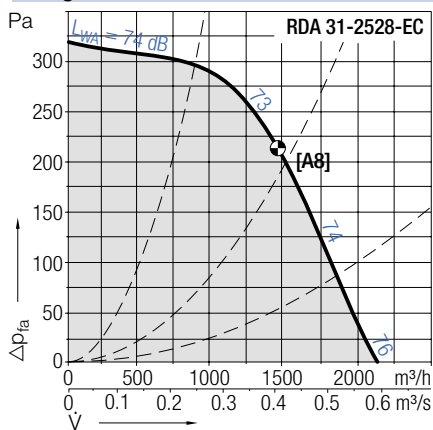


# RDA 31-/32-2528

RDA <i>genovent</i>		Tekniska data ( $V_{max}$ / $L_{WAB}$ giltig för RDA 31)						Technical Data ( $V_{max}$ / $L_{WAB}$ valid to RDA 31)					
r- vor	Pol- tal	Spänning/ ansl tning	Frek- vens	Varvtal	Max. effekt- förbr kning	Märk- ström	Startström/ Märkström	$V_{max}$	$L_{WAB}$ vid $V_{max}$	onden- sator	Skydds- Isolationskl.	Vikt 31/32	Media- temp.
C rves	Poles	Voltage/ Connection	Fre- q ency	Speed	Max. power cons mption	Nominal c rrent	Starting/F ll load c rrent	$V_{max}$	$L_{WAB}$ at $V_{max}$	Capa- citor	Protection/ Temp. class	Weight 31/32	Media temp.
<b>A 31-/32-</b>	<b>V</b>	<b>V</b>	<b>Hz</b>	<b>v/min</b>	<b>kW</b>	<b>A</b>		<b>m<sup>3</sup>/h</b>	<b>dB</b>	<b>μF</b>		<b>kg</b>	<b>°C</b>
<b>2528-EC• [A8]</b>	-	230, 1~	50/60	1820	0.205	1.10	-	2130	76	-	IP44/B	19/26	-20...+40

• (även) steglöst varvtalsreglerbar med spänning | • (also) stepless speed controllable by tension variation

RDA <i>genovent</i>	Kurvor	Curves	$\rho_1=1.15 \text{ kg/m}^3$
---------------------	--------	--------	------------------------------



RDA <i>genovent</i>	Tillbehör				Accessories				
Arbets- brytare	Motorskydds- brytare	Transformator 7-stegs	Transformator 5-stegs	Vridtyristor	Varvtalsregl. elektronisk	Varvtalsregl. mikroprocessor	Varvtalsregl. elektronisk	Potential- meter	
Isolator	Motor protection nit	Transformer 7 taps	Transformer 5-steps	Speed reg lator electronic	Speed reg lator electronic	Speed reg lator micro processor	Speed controller electronic	Speed reg lator mod le	
<b>A 31-/32-ESH</b>	<b>ESM</b>	<b>ETO</b>	<b>ETH</b>	<b>EPH</b>	<b>EPA</b>	<b>EPA</b>	<b>EPA</b>	<b>EGH</b>	
<b>2528-EC•</b>	21-0030-22	-	-	-	-	-	-	EGH 01	

# RDA 31-/32-2528

## RDA *genovent*



A 31-



A 32-

Lj dämpat tförande  
Noise atten ated version

### A 31- *genovent*

Gebhardt ytterrotormotor med monterat radialfläktkj l. Alla EC-typerna med integrerad komm teringsenhet.

### A 32- *genovent*

Extra lj dabsorberande beklädnad för red cering av lj d-effektnivån med ca 7 dB(A) på avl ftsidan.

Flödet red ceras vid samma tryckökning med 5-10 % jämfört med typ RDA 31.

### Tillbehör / Index

- ② L trning pp till 45° i steg om 5° är möjlig
- ⑥ En skydds nktion vid högt varvtal garanteras endast om en Dahlander-brygga finns

### A 31- *genovent*

Gebhardt external rotor motor with impeller fitted directly. All EC-types with integrated Comm tation nit.

### A 32- *genovent*

Additionally eq ipped with so nd absorbing lining for A-so nd power level red ction of abo t 7 dB at discharge. The flow rate to RDA 31 will be red ced of 5-10 % at same press re rise.

### Accessories / Index

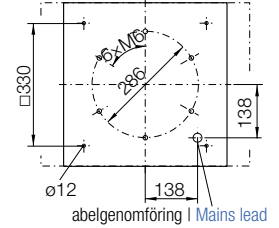
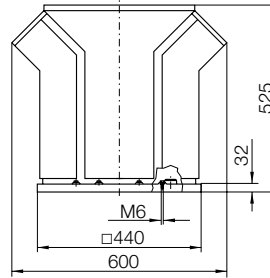
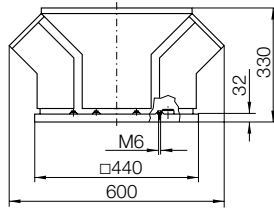
- ② inclination in 5° steps p to 45° possible
- ⑥ A protection for high speed is only active if Dahlander bridge is on place

Mått i mm, vi förbehåller oss rätten till ändringar.

A 31-2528-..

A 32-2528-..

Dimensions in mm, Subject to change.



### Tillbehör

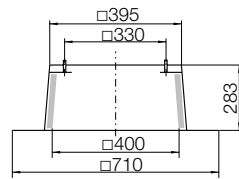
ZBS 01-0040 [Al] 4 kg

ZBS 20-0040 [St] 8 kg

Stos för platta tak

Flat roof

pstand

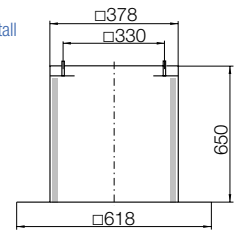


ZBS 23-0040 [St] 10 kg

Stos för platta tak, hög

Flat roof

pstand tall

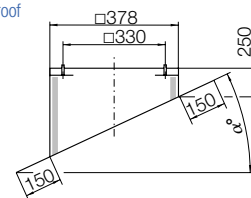


ZBS 09-0040-② [Al] 5 kg

Stos för snedtak

Inclined roof

pstand

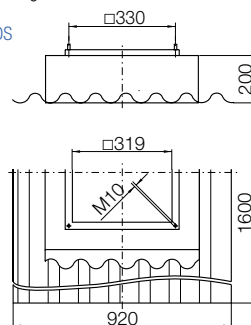


ZBS 11-0040 [GF ] 11 kg

Stos för korr gerat tak

Soaker

sheet WDS



### Accessories

Z S 01-0040 [Al] 13 kg

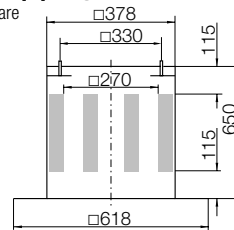
Z S 20-0040 [St] 18 kg

Stoslj ddämpare

Upstand

silencer

①



Z S 09-0040-② [Al] 13 kg

Stoslj ddämpare

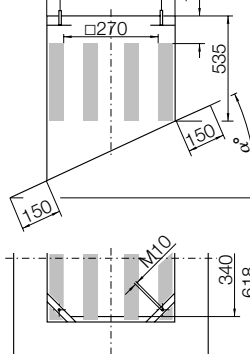
för snedtak

Inclined roof

pstand

silencer

①



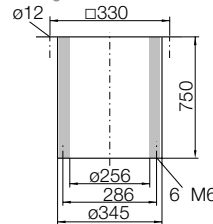
Z 30-0250 12 kg

Lj ddämpare

inloppssida

Inlet

silencer



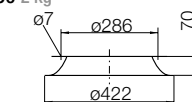
ZK 01-0250 2 kg

Inloppskona

med fläns

Flanged

inlet cone

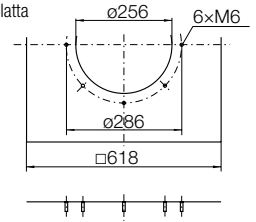


ZBU 01-0040-25 [St] 4 kg

Ansl trningsplatta

Connection

plate

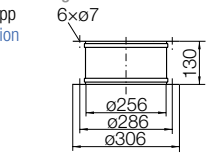


ZKE 11-0250 1.4 kg

D kstos, inlopp

Inlet connection

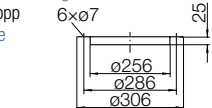
(flexible)



ZKF 11-0250 0.7 kg

Motfläns, inlopp

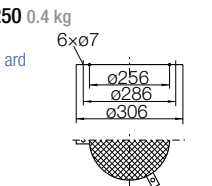
Mating flange



ZSG 04-0250 0.4 kg

Inloppsgaller

Mesh inlet g ard



G-250 [St]

Takgenomföring

inkl. fällbar stosram

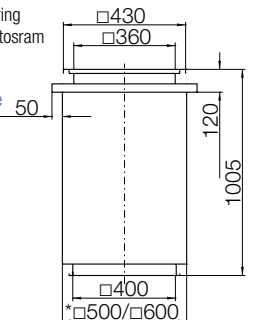
\*EI30/EI60

Roof d ct

with Foldable

frame

\*EI30/EI60

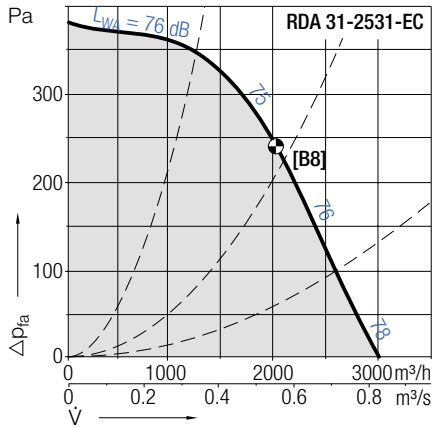


# RDA 31-/32-2531

RDA <i>genovent</i>		Tekniska data ( $V_{max}$ / $L_{WAB}$ giltig för RDA 31)						Technical Data ( $V_{max}$ / $L_{WAB}$ valid to RDA 31)					
r- vor	Pol- tal	Spänning/ ansl tning	Frek- vens	Varvtal	Max. effekt- förbr kning	Märk- ström	Startström/ Märkström	$V_{max}$	$L_{WAB}$ vid $V_{max}$	onden- sator	Skyddskl./ Isolationskl.	Vikt 31/32	Media- temp.
C rves	Poles	Voltage/ Connection	Fre- q ency	Speed	Max. power cons mption	Nominal c rrent	Starting/F ll load c rrent	$V_{max}$	$L_{WAB}$ at $V_{max}$	Capa- citor	Protection/ Temp. class	Weight 31/32	Media temp.
<b>A 31-/32-</b>		<b>V</b>	<b>Hz</b>	<b>v/min</b>	<b>kW</b>	<b>A</b>		<b>m<sup>3</sup>/h</b>	<b>dB</b>	<b>μF</b>		<b>kg</b>	<b>°C</b>
<b>2531-EC• [B8]</b>	-	230, 1~	50/60	1735	0.31	1.60	-	3000	78	-	IP44/B	21/-	-20...+40

• (även) steglöst varvtalsreglerbar med spänning | • (also) stepless speed controllable by tension variation

RDA <i>genovent</i>	Kurvor	Curves	$\rho_1=1.15 \text{ kg/m}^3$
---------------------	--------	--------	------------------------------



RDA <i>genovent</i>		Tillbehör				Accessories			
Arbets- brytare	Motorskydds- brytare	Transformator 7-stegs	Transformator 5-stegs	Vridtyristor	Varvtalsregl. elektronisk	Varvtalsregl. mikroprocessor	Varvtalsregl. elektronisk	Potential- meter	
Isolator	Motor protection nit	Transformer 7 taps	Transformer 5-steps	Speed reg lator electronic	Speed reg lator electronic	Speed reg lator micro processor	Speed controller electronic	Speed reg lator mod le	
<b>A 31-/32-ESH</b>	<b>ESM</b>	<b>ETO</b>	<b>ETH</b>	<b>EPH</b>	<b>EPA</b>	<b>EPA</b>	<b>EPA</b>	<b>EGH</b>	
<b>2531-EC•</b>	21-0030-22	-	-	-	-	-	-	EGH 01	

# RDA 31-/32-2531

**RDA genovent**



A 31-



A 32-

Lj dämpat tförande  
Noise atten ated version

**A 31- genovent**

Gebhardt ytterrotormotor med monterat radialfläktkj l. Alla EC-typerna med integrerad komm teringsenhet.

**A 32- genovent**

Extra lj dabsorberande beklädnad för red cering av lj d-effektnivån med ca 7 dB(A) på avl ftsidan.

Flödet red ceras vid samma tryckökning med 5-10 % jämfört med typ RDA 31.

**Tillbehör / Index**

- ② L trning pp till 45° i steg om 5° är möjlig
- ⑥ En skydds nktion vid högt varvtal garanteras endast om en Dahlander-brygga finns

**A 31- genovent**

Gebhardt external rotor motor with impeller fitted directly. All EC-types with integrated Comm tation nit.

**A 32- genovent**

Additionally eq ipped with so nd absorbing lining for A-so nd power level red ction of abo t 7 dB at discharge. The flow rate to RDA 31 will be red ced of 5-10 % at same press re rise.

**Accessories / Index**

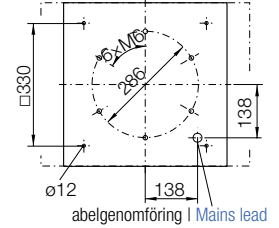
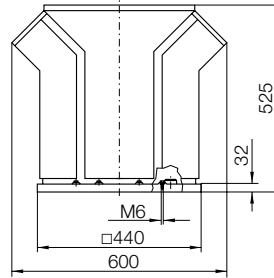
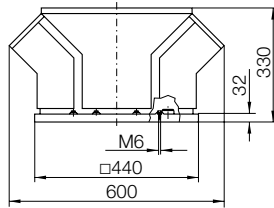
- ② inclination in 5° steps p to 45° possible
- ⑥ A protection for high speed is only active if Dahlander bridge is on place

Mått i mm, vi förbehåller oss rätten till ändringar.

Dimensions in mm, Subject to change.

A 31-2531-..

A 32-2531-..



**Tillbehör**

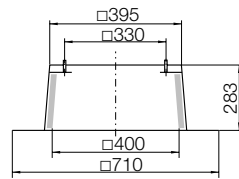
ZBS 01-0040 [Al] 4 kg

ZBS 20-0040 [St] 8 kg

Stos för platta tak

Flat roof

pstand

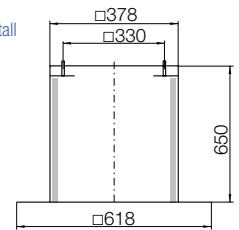


ZBS 23-0040 [St] 10 kg

Stos för platta tak, hög

Flat roof

pstand tall

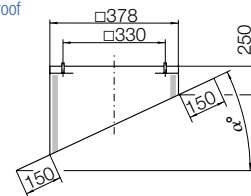


ZBS 09-0040-② [Al] 5 kg

Stos för snedtak

Inclined roof

pstand

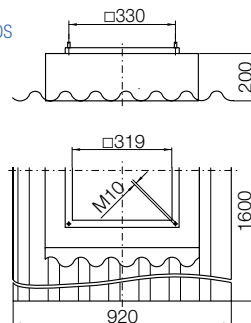


ZBS 11-0040 [GF ] 11 kg

Stos för korr gerat tak

Soaker

sheet WDS



**Accessories**

Z S 01-0040 [Al] 13 kg

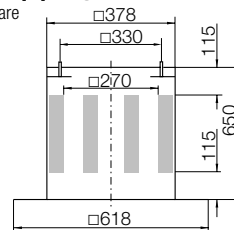
Z S 20-0040 [St] 18 kg

Stoslj ddämpare

Upstand

silencer

①



Z S 09-0040-② [Al] 13 kg

Stoslj ddämpare

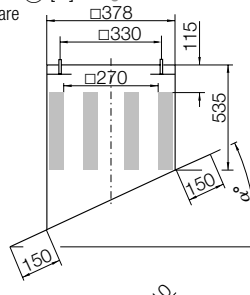
för snedtak

Inclined roof

pstand

silencer

①



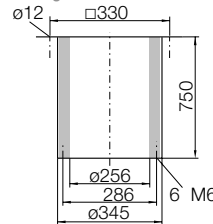
Z 30-0250 12 kg

Lj ddämpare

inloppssida

Inlet

silencer



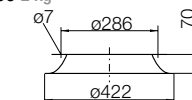
ZK 01-0250 2 kg

Inloppskona

med fläns

Flanged

inlet cone

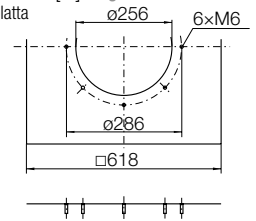


ZBU 01-0040-25 [St] 4 kg

Ansl trningsplatta

Connection

plate

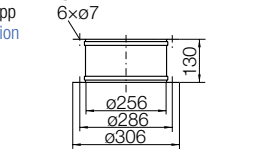


ZKE 11-0250 1.4 kg

D kstos, inlopp

Inlet connection

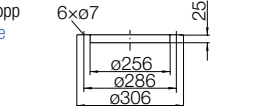
(flexible)



ZKF 11-0250 0.7 kg

Motfläns, inlopp

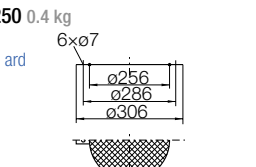
Mating flange



ZSG 04-0250 0.4 kg

Inloppsgaller

Mesh inlet g ard



G-250 [St]

Takgenomföring

inkl. fällbar stosram

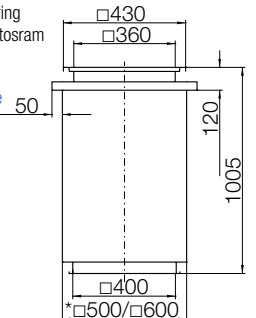
\*EI30/EI60

Roof d ct

with Foldable

frame

\*EI30/EI60

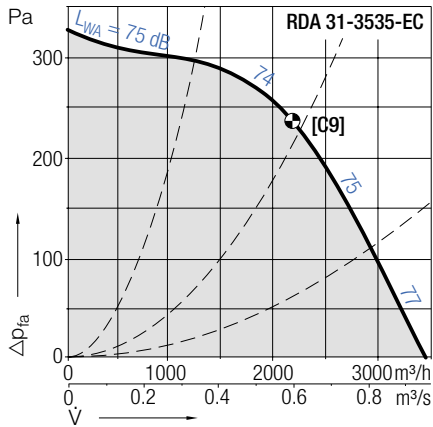


# RDA 31-/32-3535

RDA <i>genovent</i>		Tekniska data ( $V_{max}$ / $L_{WAB}$ giltig för RDA 31)						Technical Data ( $V_{max}$ / $L_{WAB}$ valid to RDA 31)					
r- vor	Pol- tal	Spänning/ ansl tning	Frek- vens	Varvtal	Max. effekt- förbr kning	Märk- ström	Startström/ Märkström	$V_{max}$	$L_{WAB}$ vid $V_{max}$	onden- sator	Skyddskl./ Isolationskl.	Vikt 31/32	Media- temp.
C rves	Poles	Voltage/ Connection	Fre- q ency	Speed	Max. power cons mption	Nominal c rrent	Starting/F ll load c rrent	$V_{max}$	$L_{WAB}$ at $V_{max}$	Capa- citor	Protection/ Temp. class	Weight 31/32	Media temp.
A 31 /32	V	Hz	v/min	kW	A	m <sup>3</sup> /h	dB	μF	kg	°C			
3535 EC• [C9]	-	230, 1~	50/60	1460	0.34	1.80	-	3460	77	-	IP44/B	28/-	-20...+40

• (även) steglöst varvtalsreglerbar med spänning | • (also) stepless speed controllable by tension variation

RDA <i>genovent</i>	Kurvor	Curves	$\rho_1=1.15 \text{ kg/m}^3$
---------------------	--------	--------	------------------------------



RDA <i>genovent</i>		Tillbehör				Accessories			
Arbets- brytare	Motorskydds- brytare	Transformator 7-stegs	Transformator 5-stegs	Vridtyristor	Varvtalsregl. elektronisk	Varvtalsregl. mikroprocessor	Varvtalsregl. elektronisk	Potentio- meter	
Isolator	Motor protection nit	Transformer 7 taps	Transformer 5-steps	Speed reg lator electronic	Speed reg lator electronic	Speed reg lator micro processor	Speed controller electronic	Speed reg lator mod le	
A 31 /32 ESH	ESM	ETO	ETH	EPH	EPA	EPA	EPA	EGH	
3535 EC•	21-0030-22	-	-	-	-	-	-	EGH 01	

# RDA 31-/32-3535

**RDA genovent**



A 31-



A 32-

Lj dämpat t förande  
Noise atten ated version

**A 31- genovent**

Gebhardt ytterrotormotor med monterat radialfläktkj l. Alla EC-typerna med integrerad komm teringsenhet.

**A 32- genovent**

Extra lj dabsorberande beklädnad för red cering av lj d-effektnivån med ca 7 dB(A) på avl ftsidan.

Flödet red ceras vid samma tryckökning med 5-10 % jämfört med typ RDA 31.

**Tillbehör / Index**

- ② L trning pp till 45° i steg om 5° är möjlig
- ⑥ En skydds nktion vid högt varvtal garanteras endast om en Dahlander-brygga finns

**A 31- genovent**

Gebhardt external rotor motor with impeller fitted directly. All EC-types with integrated Comm tation nit.

**A 32- genovent**

Additionally eq ipped with so nd absorbing lining for A-so nd power level red ction of abo t 7 dB at discharge. The flow rate to RDA 31 will be red ced of 5-10 % at same press re rise.

**Accessories / Index**

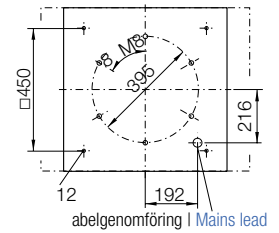
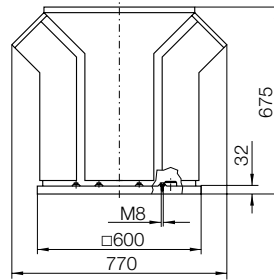
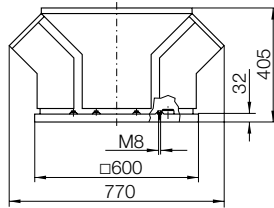
- ② inclination in 5° steps p to 45° possible
- ⑥ A protection for high speed is only active if Dahlander bridge is on place

Mått i mm, vi förbehåller oss rätten till ändringar.

A 31-3535-..

A 32-3535-..

Dimensions in mm, Subject to change.



**Tillbehör**

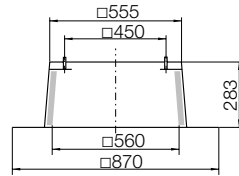
ZBS 01-0056 [Al] 5 kg

ZBS 20-0056 [St] 10 kg

Stos för platta tak

Flat roof

pstand

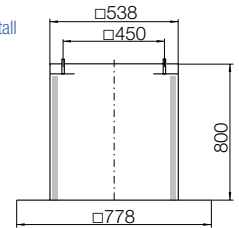


ZBS 23-0056 [St] 14 kg

Stos för platta tak, hög

Flat roof

pstand tall

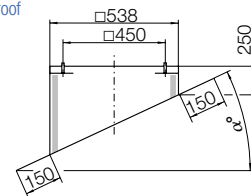


ZBS 09-0056-② [Al] 6 kg

Stos för snedtak

Inclined roof

pstand

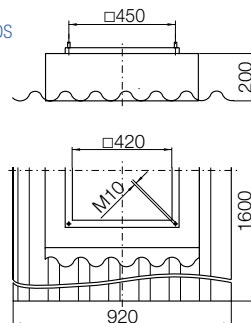


ZBS 11-0056 [GF ] 12 kg

Stos för korr gerat tak

Soaker

sheet WDS



**Accessories**

Z S 01-0056 [Al] 29 kg

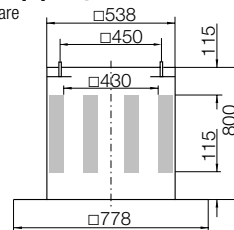
Z S 20-0056 [St] 40 kg

Stoslj ddämpare

Upstand

silencer

①



Z S 09-0056-② [Al] 29 kg

Stoslj ddämpare

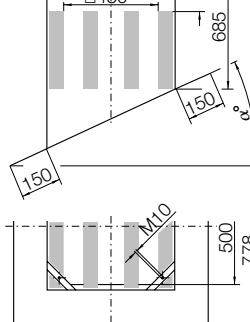
för snedtak

Inclined roof

pstand

silencer

①



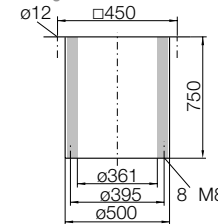
Z 30-0355 17 kg

Lj ddämpare

inloppssida

Inlet

silencer



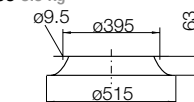
ZK 01-0355 3.5 kg

Inloppskona

med fläns

Flanged

inlet cone

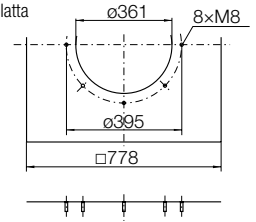


ZBU 01-0056-35 [St] 6 kg

Ansl trningsplatta

Connection

plate

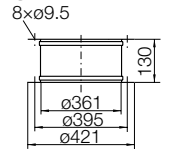


ZKE 11-0355 2.1 kg

D kstos, inlopp

Inlet connection

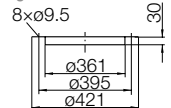
(flexible)



ZKF 11-0355 0.9 kg

Motfläns, inlopp

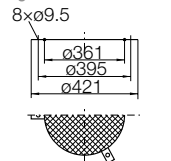
Mating flange



ZSG 04-0355 0.6 kg

Inloppsgaller

Mesh inlet g ard



G-350 [St]

Takgenomföring

inkl. fällbar stosram

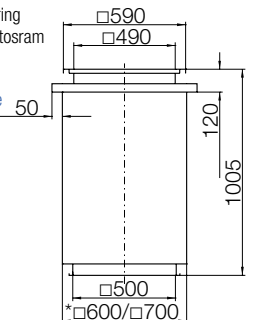
\*EI30/EI60

Roof d ct

with Foldable

frame

\*EI30/EI60

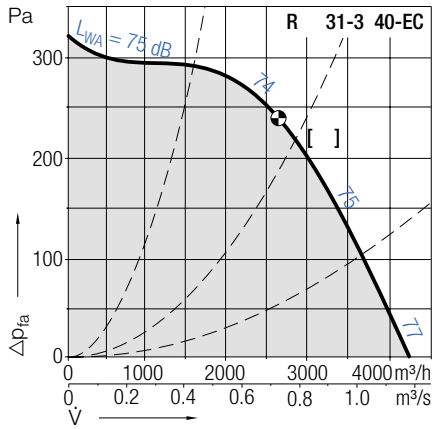


# RDA 31-/32-3540

RDA <i>genovent</i>		Tekniska data ( $V_{max}$ / $L_{WAB}$ giltig för RDA 31)						Technical Data ( $V_{max}$ / $L_{WAB}$ valid to RDA 31)					
r- vor	Pol- tal	Spänning/ ansl tning	Frek- vens	Varvtal	Max. effekt- förbr kning	Märk- ström	Startström/ Märkström	$V_{max}$	$L_{WAB}$ vid $V_{max}$	onden- sator	Skyddskl./ Isolationskl.	Vikt 31/32	Media- temp.
C rves	Poles	Voltage/ Connection	Fre- q ency	Speed	Max. power cons mption	Nominal c rrent	Starting/F ll load c rrent	$V_{max}$	$L_{WAB}$ at $V_{max}$	Capa- citor	Protection/ Temp. class	Weight 31/32	Media temp.
A 31 32		V	Hz	v min	kW	A		$m^3 h$	dB	$\mu F$		kg	$^{\circ}C$
3540 EC• [ 9]	-	230, 1~	50/60	1260	0.40	1.80	-	4230	77	-	IP44/B	31/-	-20...+40

• (även) steglöst varvtalsreglerbar med spänning | • (also) stepless speed controllable by tension variation

RDA *genovent* Kurvor Curves  $\rho_1=1.15 \text{ kg/m}^3$



RDA <i>genovent</i>		Tillbehör				Accessories			
Arbets- brytare	Isolator	Motorskydds- brytare	Transformator 7-stegs	Transformator 5-stegs	Vridtyristor	Varvtalsregl. elektronisk	Varvtalsregl. mikroprocessor	Varvtalsregl. elektronisk	Potentio- meter
		Motor protection nit	Transformer 7 taps	Transformer 5-steps	Speed reg lator electronic	Speed reg lator electronic	Speed reg lator micro processor	Speed controller electronic	Speed reg lator mod le
A 31 32 ESH		ESM	ETO	ETH	EPH	EPA	EPA	EPA	EGH
3540 EC•	21-0030-22	-	-	-	-	-	-	-	EGH 01

# RDA 31-/32-3540

**RDA genovent**



A 31



A 32

Ljuddämpat utförande  
Noise attenuated version

**A 31 genovent**

Gebhardt ytterrotormotor med monterat radialfläkt hjul. Alla EC-typerna med integrerad kommuteringsenhet.

**A 32 genovent**

Extra ljudabsorberande beklädnad för reduktion av ljud-effektivnivå med ca 7 dB(A) på avluftssidan.

Flödet reduceras vid samma tryckökning med 5-10 % jämfört med typ RDA 31.

**Tillbehör Index**

- ② Lutning upp till 45° i steg om 5° är möjlig
- ⑥ En skyddsfunktion vid högt varvtal garanteras endast om en Dahlander-brygga finns

**A 31 genovent**

Gebhardt external rotor motor with impeller fitted directly. All EC-types with integrated Commutation unit.

**A 32 genovent**

Additionally equipped with sound absorbing lining for A32 so sound power level reduction of about 7 dB at discharge. The flow rate to RDA 31 will be reduced of 5-10 % at same pressure rise.

**Accessories Index**

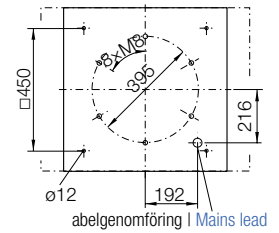
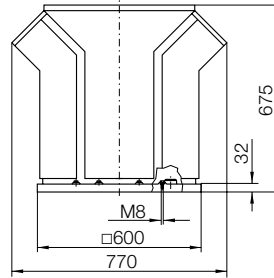
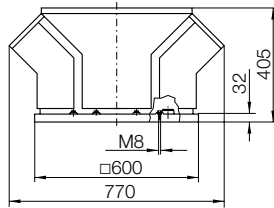
- ② inclination in 5° steps up to 45° possible
- ⑥ A protection for high speed is only active if Dahlander bridge is in place

Mått i mm, vi förbehåller oss rätten till ändringar.

A 31 3540

A 32 3540

Dimensions in mm, Subject to change.



**Tillbehör**

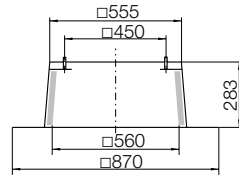
ZBS 01 0056 [Al] 5 kg

ZBS 20 0056 [St] 10 kg

Stos för platta tak

Flat roof

stand

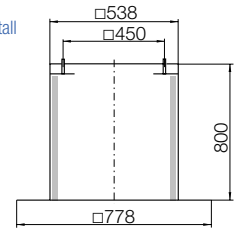


ZBS 23 0056 [St] 14 kg

Stos för platta tak, hög

Flat roof

stand tall

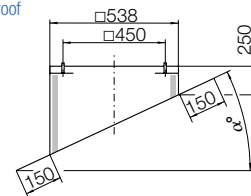


ZBS 09 0056 ② [Al] 6 kg

Stos för snedtak

Inclined roof

stand

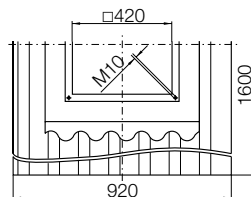
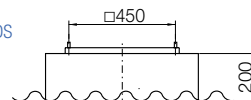


ZBS 11 0056 [GF] 12 kg

Stos för korrugerat tak

Soaker

sheet WDS



**Accessories**

Z S 01 0056 [Al] 29 kg

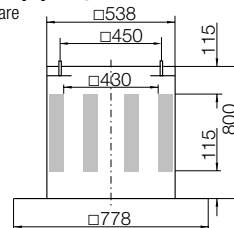
Z S 20 0056 [St] 40 kg

Stosljuddämpare

Upstand

silencer

①



Z S 09 0056 ② [Al] 29 kg

Stosljuddämpare

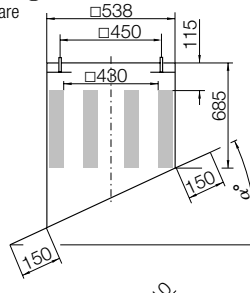
för snedtak

Inclined roof

stand

silencer

①



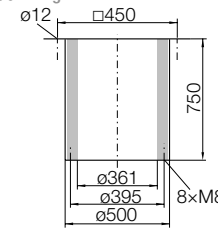
Z 30 0355 17 kg

Ljuddämpare

inloppssida

Inlet

silencer

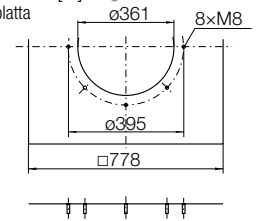


ZBU 01 0056 35 [St] 6 kg

Anslutningsplatta

Connection

plate

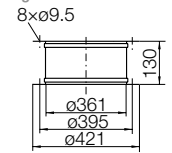


ZKE 11 0355 21 kg

Dk-stos, inlopp

Inlet connection

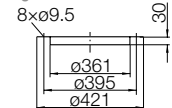
(flexible)



ZKF 11 0355 09 kg

Motfläns, inlopp

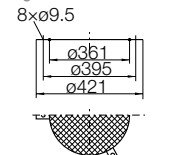
Mating flange



ZSG 04 0355 06 kg

Inloppsgaller

Mesh inlet guard



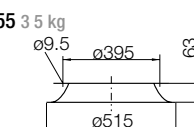
ZK 01 0355 35 kg

Inloppskona

med fläns

Flanged

inlet cone



G 350 [St]

Takgenomföring

inkl. fällbar stösram

\*EI30/EI60

Roof duct

with Foldable

frame

\*EI30/EI60

